

## ZHP-0830 Solenoids Pump



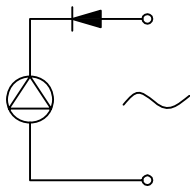
总重量 Total Weight: 80g  
应用范围: 用于蒸汽熨斗和清洁机等  
APPLICATION: Mainly Applied In Steam Iron And Cleaner etc

### 综合特性 GENERAL FEATURES

**电气连接**  
ELECTRICAL CONNECTION

(交流) 通过一个二极管 ( $\geq 1A$ )  
此连接必须按照图示  
(AC) through a diode ( $\geq 1A$ ), the connection has to be made as shown on diagram

(直流) 需要使用一个方波脉冲转换器  
(DC) requires the use of a square waves impulse converter



空载时间  
NONLOADED TIME

$\leq 3$ 分钟  
 $\leq 3$ minute

寿命  
WORKLIFE

连续工作800小时  
above 800 work hours

活塞和弹簧  
PISTON AND SPRING

高耐腐蚀不锈钢  
stainless steel high corrosion resistance

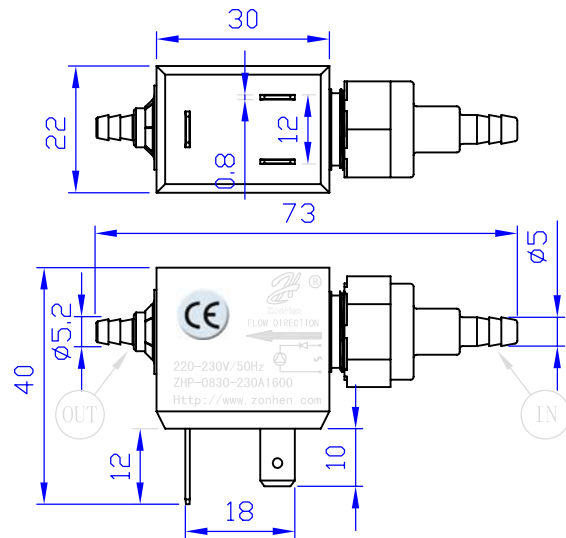
流体  
FLUIDS

水和无腐蚀性介质  
water and non corrosive media

抽吸距离  
SUCTION PREVALENCE

泵体与液面高度差按  $50 \pm 10$ cm, 进水侧胶管长为  $80 \pm 10$ cm, 抽吸出水时间  $\leq 20$ Sec  
Height (Pump)-Height (Liquid level) =  $50 \pm 10$ cm, the length of inlet host is  $80 \pm 10$ cm, the time of pump water  $\leq 20$ Sec

类型: 水泵 TYPE: Water Pump



单位:mm Units:mm

### COIL SPECIFICATION (at 20° C)

Coil Sensitivity	Duty Cycle (%)	Nominal voltage (VAC)	Nominal current (A)	Coil Resistance ( $\Omega \pm 10$ )	Power Consumption (W)	Max "ON" time (Sec)	Max Pressure (Bar)	Max Flow Rate (cc/min)
ZHP-0830-24A15	100	24	1.6	15	12	$\infty$	1.2	230
ZHP-0830-220A1100	100	220	0.2	1100	14	$\infty$	1.2	230
ZHP-0830-220B1100	100	220	0.2	1100	14	$\infty$	3.2	160
ZHP-0830-230E1100	100	220	0.21	1100	14	$\infty$	2.4	180

### CHARACTERISTICS (Typical data at 20° C)

